



COMMONWEALTH OF PENNSYLVANIA
PENNSYLVANIA GAME COMMISSION
2001 ELMERTON AVENUE, HARRISBURG, PA 17110-9797

June 11, 2007

Mr. Peter Barth
AMEC Earth & Environmental, Inc.
Wexford Professional Building III, Suite 3101
11676 Perry Highway
Wexford, PA 15090

Re: PNDI Database Review
Shaffer Mountain Wind Development Site (Revised)
Gamesa Energy USA
Ogle and Shade Townships, Somerset County, PA

Dear Mr. Barth:

This is in response to your verbal request of June 8, 2007 regarding an updated review for potential impacts to state listed special concern species of bird or mammal as related to this project.

The Pennsylvania Game Commission (PGC) is the state agency that (under Title 34, the Game and Wildlife Code) has jurisdiction to protect, propagate, manage and preserve the birds and mammals of this Commonwealth. The PGC appreciates the opportunity to provide comments regarding potential impacts to wildlife while your project is in the planning stage.

Based on past data and known locations of species of special concern in the Pennsylvania Natural Diversity Inventory (PNDI) Database, the revised large potential project area does not contain any endangered or threatened species of birds or mammals recognized by the PGC. Please note that at this time the PNDI Database contains little or no information on migrating birds and migrating mammals (bats). This determination may be reconsidered if project plans change or extend beyond the present study area, or if additional information becomes available on state-listed species.

The revised project area is located right on the Allegheny Front escarpment and is listed as an **Important Bird Area** by Pennsylvania Audubon because of its importance to raptor migration. This wind site is located on a major migratory corridor for the eastern population of the golden eagle (*Aquila chrysaetos*). Locating a wind power facility right on the Allegheny Front escarpment will put migrating raptors, especially golden eagles, at a fairly high risk for injury and mortality due the operation of wind turbines.

ADMINISTRATIVE BUREAUS:

PERSONNEL: 717-787-7896 ADMINISTRATION: 717-787-5670 AUTOMOTIVE AND PROCUREMENT DIVISION: 717-787-6594
LICENSE DIVISION: 717-787-2084 WILDLIFE MANAGEMENT: 717-787-5529 INFORMATION & EDUCATION: 717-787-8288 LAW ENFORCEMENT: 717-787-5740
LAND MANAGEMENT: 717-787-6818 REAL ESTATE DIVISION: 717-787-6568 AUTOMATED TECHNOLOGY SYSTEMS: 717-787-4076 FAX: 717-772-2411

WWW.PGC.STATE.PA.US

AN EQUAL OPPORTUNITY EMPLOYER

Mr. Peter Barth

2

June 11, 2007

Please be advised that the PGC did not previously provide specific information about potential impacts to birds and mammals and state game lands because we were not provided with a draft site plan that included all access roads, roadways, turbine locations, utility lines, power lines, support buildings, etc. The PGC reserves our right to comment on additional potential adverse impacts to birds and mammals, state game lands, and critical and unique wildlife habitats until such time as we are provided with a revised site plan.

State Game Land # 228 is contained within your large potential project area. The map (Figure 1) included in your Allegheny Woodrat Survey Report, mailed to the PGC on January 19, 2007, shows wind turbine # D13 on State Game Lands # 228. Please be advised that to date the PGC has not approved the construction of any wind turbine on any State Game Lands. The PGC will consider proposals to accommodate wind power facilities on State Game Lands. However, the protection of the inherent recreational use of Game Lands and their associated wildlife habitat values are to remain the highest priority with regard to the Commission's review of "wind energy power" project proposals on State Game Lands throughout the Commonwealth. The use of Game Lands to accommodate wind energy projects must not only be reviewed and approved within strict accordance of Title 34 Game & Wildlife Code, but also must be reviewed to ensure the protection and conservation of the Commonwealth's wildlife resources. Likewise, the sportsman and women who paid for and use these lands must receive better than equal compensation in both wildlife/recreational value and monetary compensation values should a wind energy project on Game Lands ultimately be approved by the Commission.

The operation of wind power projects has resulted in mortality to birds and bats in numerous states and has been documented in Somerset and Luzerne Counties in Pennsylvania. The potential exists that mortality to federally and state listed species of special concern and other species under the PGC's jurisdiction may occur due to tower operation. Of particular concern are the impacts during spring and fall migrations of birds and bats. Two state and federally listed species, Indiana bats (*Myotis sodalis*) and bald eagles (*Haliaeetus leucocephalus*), occur in eastern Pennsylvania and could be adversely impacted by your proposed project. Additional coordination will need to occur with the U.S. Fish & Wildlife Service concerning impacts and required surveys for these species.

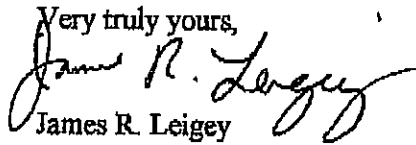
In closing, we greatly appreciate the opportunity to comment on your proposed wind power project. If you should have any questions concerning this matter please feel free to contact me at (717) 783-5957. We look forward to working with you.

Mr. Peter Barth

3

June 11, 2007

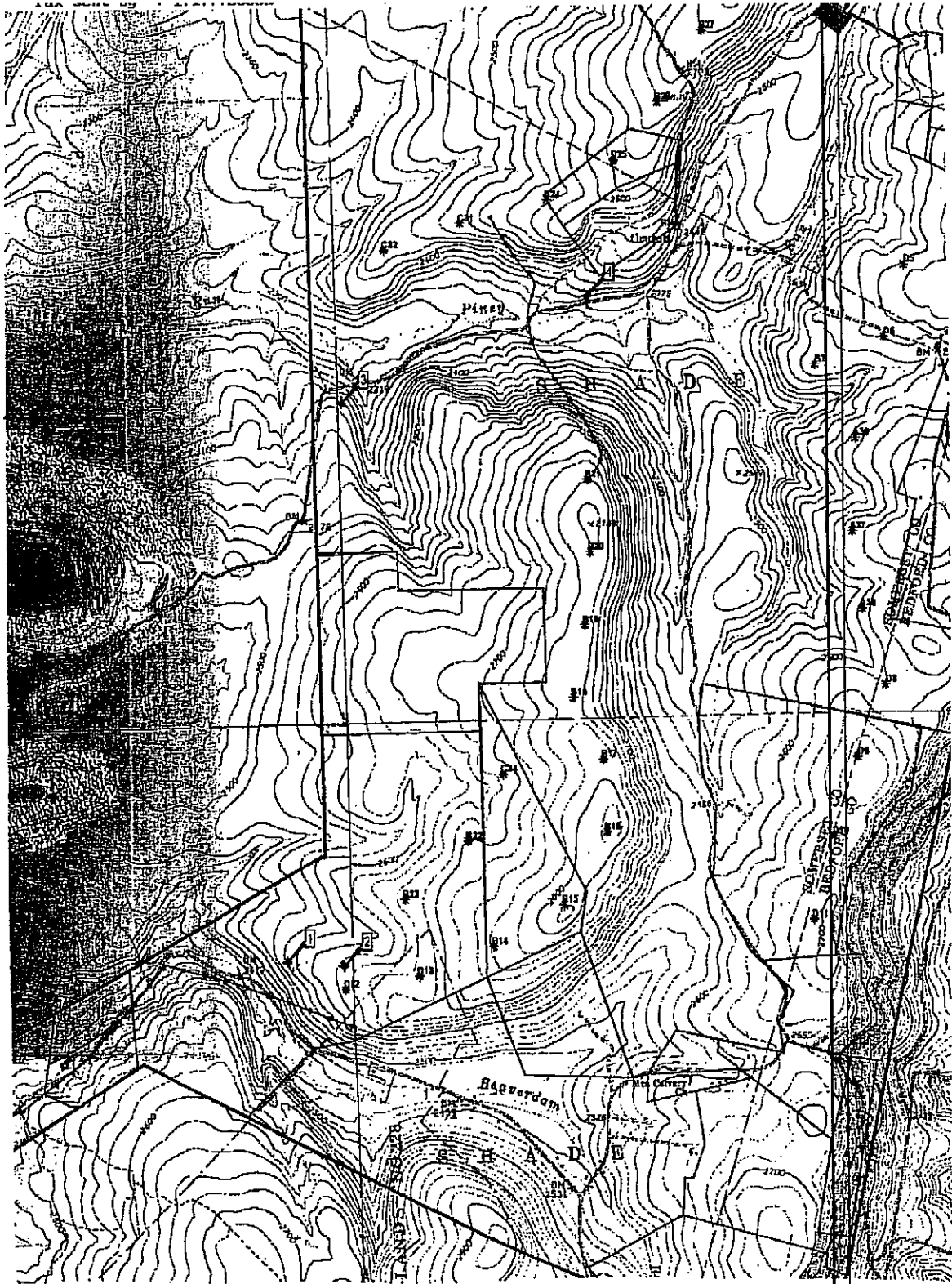
Very truly yours,




James R. Leigey
Wildlife Impact Review Coordinator
Division of Environmental Planning
And Habitat Protection
Bureau of Land Management

Attachment

- Cc: File
Brauning
Butchkoski
Capouillez
Gross
Hough
Pouss
Tomlinson
Trusso
Turner
Zaffuto



| LEGEND | FIGURE 1 |
|---|--|
| <ul style="list-style-type: none"> ◆ Allegheny Woodrat Survey Site * Turbines — Turbine Service Roads — Cable Corridor Only — Existing REC Transmission Line — Proposed Transmission Line □ Parcels □ Project Area ■ Staging Area ■ Substation Area | <p style="text-align: center;"> Allegheny Woodrat Survey Shaffer Mountain Wind Project Somerset & Bedford Counties, Pennsylvania </p> <hr/> <p> amec  AMEC EARTH & ENVIRONMENTAL, INC 11676 Perry Highway Professional Building III, Suite 3101 Wexford, Pennsylvania 15090 </p> |